



HOSPITALITY

# Pro:Centric™ Single Tuner™ Slim Direct LED TV with Integrated Pro:Idiom®

## ▶ 47LY560H

47" class (46.96" measured diagonally)

## ▶ 42LY560H

42" class (41.92" measured diagonally)

## ▶ 39LY560H

39" class (39.0" measured diagonally)

## ▶ 32LY560H

32" class (31.51" measured diagonally)



### RAISING THE STANDARD OF FINE SERVICE

Whenever guests find comfortable accommodations that suit their needs, LG Hotel TVs have been a part of leaving a positive impression. LG's continuing commitment towards achieving the highest standard of excellence enables us to deliver the best solutions and products in the industry.

### A TRUE DEDICATION TO MUTUAL SUCCESS

LG's focus on the success of your business and your guest's satisfaction has led to true partnerships based on reliability, trust and excellence.

### MAXIMIZING THE GUEST EXPERIENCE

As hotel guests are increasingly demanding their at-home viewing experience, greater customization and flexibility of their TV service, the same needs have risen for service providers. LG hotel TVs provide the built-in capability to support customized applications and services through a wide array of system integrators and service providers.

### Features

#### No need for printed materials for the guests

Providing incredibly easy-to-use content delivery and a flexible communications interface, LG opens up new and exciting possibilities in guest room interactivity. The ability to quickly and easily add or update information creates real savings in printing costs and allows a more timely presentation of pertinent and valuable information to guests. Guests will be able to locate and enjoy available television entertainment with the channel selection guide application, check on the daily weather, and review the available hotel amenities.

#### Reduced waste, save cost and time

Less hardware and no printed materials for the room mean less carbon footprint for the environment and cost and time saving for the businesses. Furthermore, it helps to make the guest rooms look tidy.

## FREE Interactive Electronic Program Guide Service for Pro:Centric® TVs!



## Plan Highlights

If your property has purchased or plans to purchase LG's Pro:Centric® TVs, you qualify for a free Electronic Program Guide (EPG) that allows guests to easily navigate TV channels and programs - just like they do at home.

Participating properties must purchase and install a Pro:Centric® server and supply an internet connection for daily program updates. Properties must also contract with an LG authorized partner to install and program the server to match your Free-to-Guest (FTG)

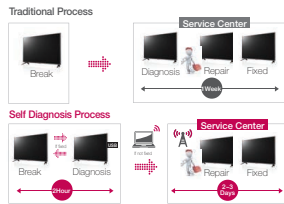
FREE program guide service runs until Dec. 2017, replacing the current programming fee of \$1.50 per room per month.

Contact your LG sales representative or visit [LG.com/us/commercial/display-discover/epg/index.jsp](http://LG.com/us/commercial/display-discover/epg/index.jsp)



## Self Diagnosis

Enables service engineers to recognize technical issues in the TV quickly and easily through a USB device. The TV stores any technical issues it encounters and can output it to a USB device. Service engineers can use the information to analyze technical issues without the actual TV.



## Welcome Screen

Having a warm greeting message with your business area name and its logo on the TV when they enter the space will let them feel more welcome and cared for.



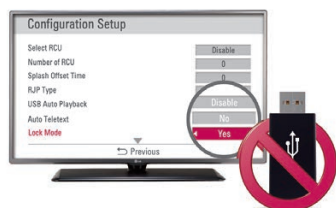
## USB Cloning

You can control a designated TV exclusively with the LG Multi IR Remote control unit. In areas where there are multiple TVs installed, such as in large lobbies, hospitals, or nursing homes, each remote can be assigned to each TV with no signal interference from other remotes. Up to nine beds can use this function simultaneously.



## Lock Mode

The Lock Mode blocks external input signals for illegal communication, a useful feature for preventing misuse of TVs in facilities such as prisons, mental hospitals and other applicable public spaces.



## MHL (Mobile High-Definition Link)

MHL connects smart phones to the TV instantly, mirroring content in HD quality, just like connecting a PC through an HD cable. Moreover, it allows you to control the phone's content on the TV with a remote control.



## Multi IR

You can control a designated TV exclusively with the LG Multi IR Remote control unit. In areas where there are multiple TVs installed, such as in large lobbies, hospitals, or nursing homes, each remote can be assigned to each TV with no signal interference from other remotes. Up to nine beds can use this function simultaneously.





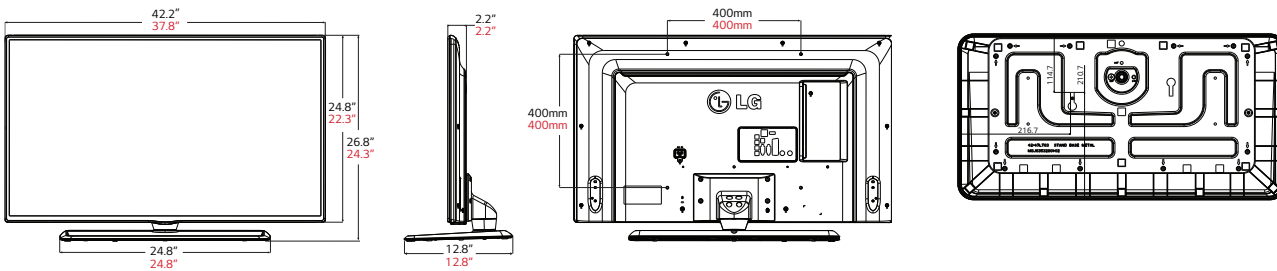
# when it's green.

LG is committed to improving product development, manufacturing and usage to meet the demand for products with environmentally friendlier features. Our televisions have technologies to reduce power consumption and in return increase cost savings per room.

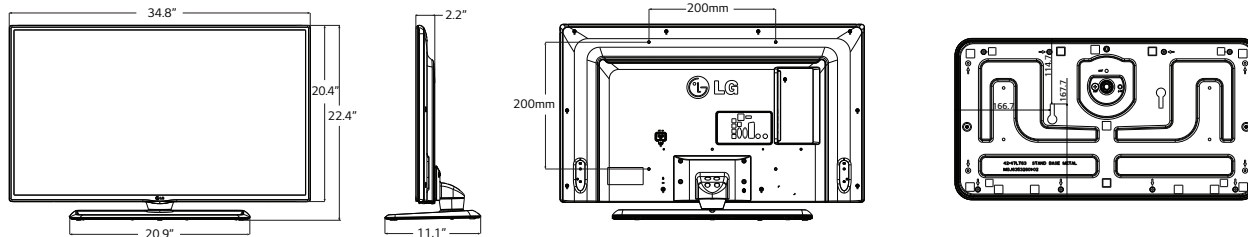
## EcoSmart

- **Dynamic Power Savings** - Using built-in algorithms, TV will automatically reduce the power consumption based on incoming video, while maximizing picture performance.
- **Static Power Savings** - Picture brightness level can be set at the preferred power consumption level to reduce power and increase energy savings.
- **CEC Compliant** - Meets the Appliance Efficiency Regulations of the California Energy Commission.
- **RoHS Compliant** - Meets directive on restriction of hazardous substances.
- **Energy Star 6.1 Qualified** - Meets current reduction requirements of energy consumption.

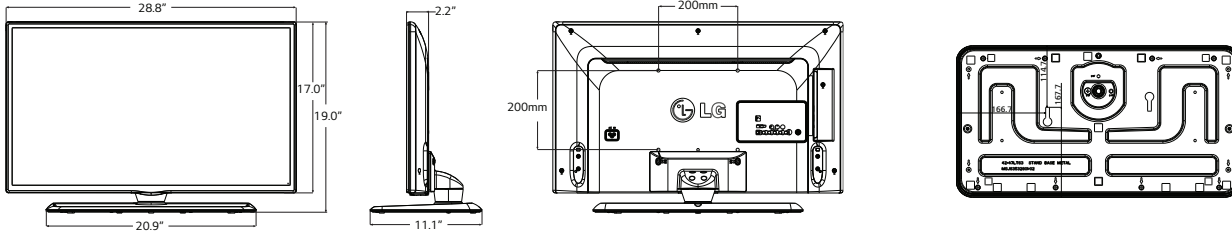
### 47LY560H/42LY560H



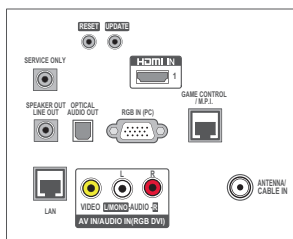
### 39LY560H



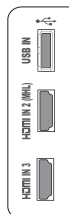
### 32LY560H



### Rear Jack Panel



### Side Jack Panel



### Anti-Theft System

The Anti-theft system provides security to prevent TVs theft. Consisting of a Kensington Lock, a Credenza and Lock Down Plate.

### Kensington Lock

- LG Hotel TVs are protected by the reliable solution the Kensington Lock.

### NEW! Reinforced Metal Stand

- Full metal reinforced stand and also neck to improve sturdiness, durability and safety.
- Provides ( $\pm 20^\circ$ ) Swivel
- Provides ( $\pm 20/45/90^\circ$ ) Swivel using Lock Down plate.

### Lock Down Plate with Credenza Hole

- Lock the TV firmly to the TV stand for added security and help deter theft. (Mounting plate, security bolts, nuts and screws are included)



# Pro:Centric™ Single Tuner™ Slim Direct LED TV with Integrated Pro:Idiom®



▶ 47LY560H

47" class (46.96" measured diagonally)

▶ 42LY560H

42" class (41.92" measured diagonally)

▶ 39LY560H

39" class (39.0" measured diagonally)

▶ 32LY560H

32" class (31.51" measured diagonally)

| PANEL                   | Model                            | 47LY560H  | 42LY560H           | 39LY560H          | 32LY560H           |
|-------------------------|----------------------------------|---|--------------------|-------------------|--------------------|
|                         | Panel Technology                 | Direct LED  |                    |                   |                    |
|                         | Panel Size (Measured Diagonally) | 47" Class (46.96")  | 42" Class (41.92") | 39" Class (39.0") | 32" Class (31.51") |
|                         | Native Resolution                | 1920 x 1080 (FHD)   |                    |                   | 1366 x 768 (HD)    |
|                         | Viewing Angle (HxV)              | 178° / 178°   |                    |                   |                    |
|                         | Contrast Ratio (Typ)             | 1,200:1   |                    | 4,000:1           | 1,100:1            |
|                         | Response Time                    | 8ms   |                    | 9.5ms             | 9ms                |
|                         | Frame Rate                       | 60Hz  |                    |                   |                    |
| BROADCASTING SYSTEM     | Analog                           | Yes (NTSC)  |                    |                   |                    |
|                         | Digital                          | Yes (ATSC /QAM/VSB)                                       |                    |                   |                    |
| VIDEO                   | Triple XD Engine                 | Yes   |                    |                   |                    |
|                         | Picture Mode                     | Yes, 6 Modes (Vivid, Standard, Eco, Cinema, Sport, Game)  |                    |                   |                    |
|                         | Aspect Ratio                     | Yes, 5 Modes (16:9, Just Scan, Set By Program, 4:3, Zoom) |                    |                   |                    |
| AUDIO                   | Audio Output                     | 10W + 10W   |                    |                   |                    |
|                         | Sound System                     | 2.0 ch  |                    |                   |                    |
|                         | Virtual Surround                 | Yes, 6 Modes (Standard, News, Music, Cinema, Sport, Game) |                    |                   |                    |
| SPECIAL FEATURES        | Pro:Centric                      | Yes (Single Tuner)  |                    |                   |                    |
|                         | HCAP (GEM/FLASH/HTML)            | Yes, GEM/FLASH  |                    |                   |                    |
|                         | MHL                              | Yes   |                    |                   |                    |
|                         | Self Diagnosis                   | Yes   |                    |                   |                    |
|                         | EzManager                        | Yes   |                    |                   |                    |
|                         | HDMI-CEC                         | Yes   |                    |                   |                    |
|                         | HTNG-CEC                         | Yes   |                    |                   |                    |
|                         | DRM                              | Yes (Pro:Idiom)   |                    |                   |                    |
|                         | Welcome Screen                   | Yes   |                    |                   |                    |
|                         | Lock Mode                        | Yes   |                    |                   |                    |
|                         | Logical Channel Map              | Yes   |                    |                   |                    |
|                         | Multi IR Code                    | Yes   |                    |                   |                    |
|                         | Installer Menu                   | Yes   |                    |                   |                    |
|                         | USB Cloning                      | Yes   |                    |                   |                    |
|                         | IR Out                           | Yes (MPI only)  |                    |                   |                    |
|                         | External Speaker Out             | Yes   |                    |                   |                    |
|                         | RJP Compatibility                | Yes   |                    |                   |                    |
|                         | Kensington Lock                  | Yes   |                    |                   |                    |
|                         | Credenza/Security Screw Hole     | Yes   |                    |                   |                    |
|                         | Lock Down Plate                  | Yes   |                    |                   |                    |
| Commercial 1 Pole Stand | Yes                              |   |                    |                   |                    |
| INTERFACE (Side)        | HDMI In                          | 2 Side  |                    |                   |                    |
|                         | USB(2.0)                         | 1 Side  |                    |                   |                    |

| INTERFACE (Rear)  | Model                                 | 47LY560H                  | 42LY560H              | 39LY560H              | 32LY560H              |  |
|---|---------------------------------------|---------------------------|-----------------------|-----------------------|-----------------------|--|
|   | RF In                                 | 1 Rear                    |                       |                       |                       |  |
|   | AV In                                 | 1 Rear (Composite)        |                       |                       |                       |  |
|   | Digital Audio Out                     | 1 Rear (Optical)          |                       |                       |                       |  |
|   | RGB In (D-sub 15pin)                  | 1 Rear                    |                       |                       |                       |  |
|   | PC Audio Input                        | 1 (Sharing with AV In)    |                       |                       |                       |  |
|   | HDMI In                               | 1 Rear                    |                       |                       |                       |  |
|   | LAN (RJ45)                            | 1 Rear                    |                       |                       |                       |  |
|   | MPI Port (RJ12)                       | 1 Rear                    |                       |                       |                       |  |
|   | External Speaker Out                  | 1 Rear (3.5mm phone jack) |                       |                       |                       |  |
|   | PTC Configuration (phone jack type)   | 1 Rear                    |                       |                       |                       |  |
| CABINET   | Bezel Width (on/off) (mm)             | 11.0mm/8.5mm              |                       | 10.5mm/9.0mm          | 11.6mm/10.5mm         |  |
|   | Depth (mm)                            | 55.8mm                    |                       | 55.5mm                |                       |  |
|   | With Stand                            | 42.2" x 26.8" x 12.8"     | 37.8" x 24.3" x 12.8" | 34.8" x 22.5" x 11.1" | 28.8" x 19.0" x 11.1" |  |
|   | Weight                                | 34.6 lbs                  | 27.8 lbs              | 24.0 lbs              | 19.6 lbs              |  |
|   | Without Stand                         | 42.2" x 24.5" x 2.2"      | 37.8" x 22.1" x 2.2"  | 34.8" x 20.4" x 2.2"  | 28.8" x 17.0" x 2.2"  |  |
|   | Weight                                | 27.1 lbs                  | 20.3 lbs              | 17.6 lbs              | 13.2 lbs              |  |
|   | Carton                                | 45.3" x 28.7" x 6.4"      | 41.7" x 28.7" x 6.4"  | 38.8" x 24.0" x 6.0"  | 32.1" x 20.1" x 7.5"  |  |
|   | Weight                                | 42.8 lbs                  | 30.4 lbs              | 28.4 lbs              | 23.6 lbs              |  |
|   | Swivel                                | Yes (± 20°)               |                       |                       |                       |  |
|   | Color                                 | Metallic Titan            |                       |                       |                       |  |
|   | VESA™ Standard Mount Interface        | 400mm x 400mm             |                       | 200mm x 200mm         |                       |  |
|   | Flame Retardant                       | Yes (Back Cover only)     |                       |                       |                       |  |
|   | REQUIRED LISTINGS                     | Safety                    | cUL, UL, FCC, NOM     |                       |                       |  |
| RoHS  |                                       | Yes                       |                       |                       |                       |  |
| Energy Star 6.1   |                                       | Yes                       |                       |                       |                       |  |
| UPC   | 7 19192 91599 2                       | 7 19192 91600 5           | 7 19192 91601 2       | 7 19192 91602 9       |                       |  |
| POWER   | Power Source                          | 110 ~ 240V, 50/60Hz       |                       |                       |                       |  |
|   | Power Cord Length                     | 5.9'                      |                       |                       |                       |  |
|   | Watts (Typical)                       | 35W                       | 34W                   | 29W                   | 20W                   |  |
|   | Stand-by                              | 0.5W↓                     |                       |                       |                       |  |
| WARRANTY  | 2-Year Limited Warranty (Parts/Labor) |                           |                       |                       |                       |  |
| REMOTE JACK PANEL COMPATIBILITY (RJP)                                 |                                       |                           |                       |                       |                       |  |
| COMPATIBLE INTERACTIVE SYSTEMS (SEPARATE SET-TOP BOX MAY BE REQUIRED) |                                       |                           |                       |                       |                       |  |
|   |                                       |                           |                       |                       |                       |  |

The estimated annual energy cost determined in accordance with 16 CFR Part 305.5 for models 47LY560H, 42LY560H, 39LY560H, 32LY560H are \$8, \$8, \$7 and \$5.

\*Your energy cost depends on your utility rates and use. The estimated cost is based on 11 cents per kWh and 5 hours of use per day. For more information, visit [www.ftc.gov/energy](http://www.ftc.gov/energy).

†FTC Television labeling rule (18 CFR Part 305, as added by 76 Fed. Reg. 1038 [Jan 6, 2011]).

All screen images are simulated. Dimensions and weights are approximate. Design, specifications, and features subject to change without notice.

LG Electronics U.S.A., Inc.  
HE B2B Division  
2000 Millbrook Drive  
Lincolnshire, IL 60069

Customer Service: 888.865.3026  
[www.LGSolutions.com/support](http://www.LGSolutions.com/support)

Contact your LG Regional Sales Representative:  
Channel: 800.897.8871  
Hospitality: 800.228.1236  
E-mail: [info@LGSolutions.com](mailto:info@LGSolutions.com)

SPEC\_LY560Hseries\_031420\_PR

© Copyright 2014 LG Electronics USA, Inc. All Rights Reserved. "LG Life's Good" is a registered trademark of LG Corp.

ENERGY STAR is a registered trademark of the U.S. Environmental Protection Agency. In Plane Switching is a trademark of LG Display Co., LTD. Java is a trademark of Oracle, Inc. Adobe and Flash are either registered trademarks or trademarks of Adobe Systems Incorporated in the United States and/or other countries. VESA is a trademark of Video Electronics Standards Association. HDMI, the HDMI logo and High-Definition Multimedia Interface are trademarks or registered trademarks of HDMI Licensing LLC.

All other product and brand names are trademarks or registered trademarks of their respective companies.

Printed in the USA. May 2014

